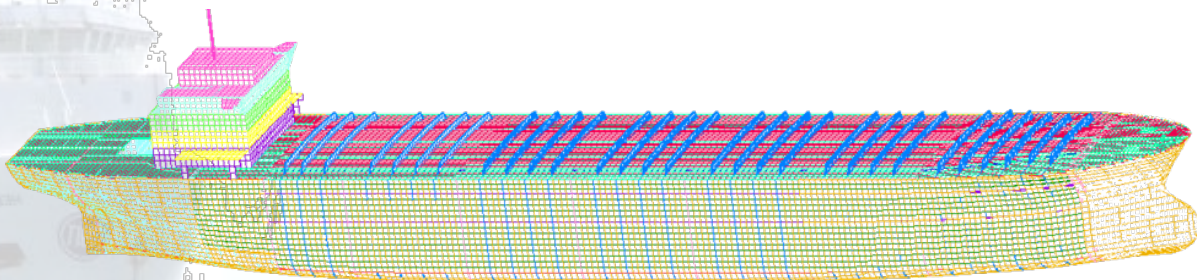
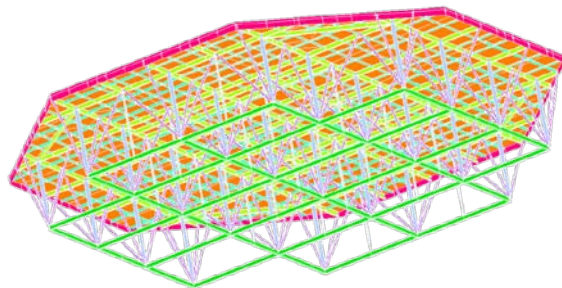
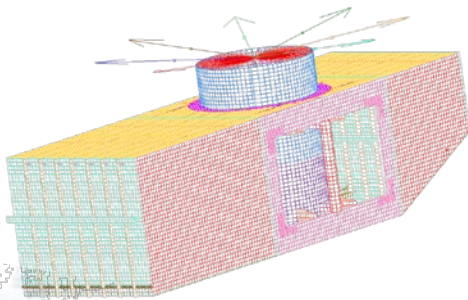
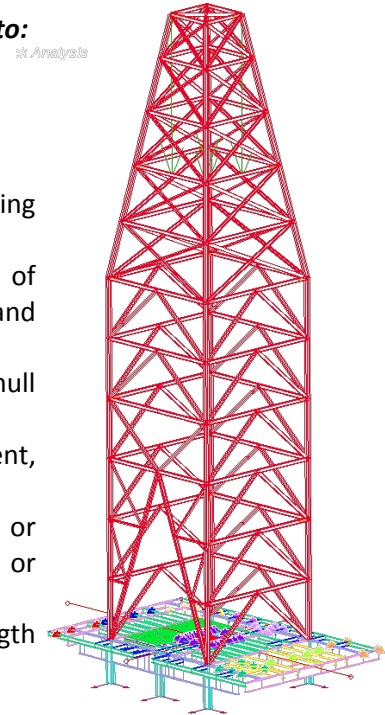


Offshore structure projects today require that the design and analysis are performed efficiently in terms of time and money. Zebec capable of performing structural assessments of most types of offshore structures, including jackets, jackups, floating production storage and offloading (FPSO) systems, semi-submersibles, barges and ships with experienced structural engineers and comprehensive engineering analysis suites.

Some of the studies that can be conducted include but are not limited to:

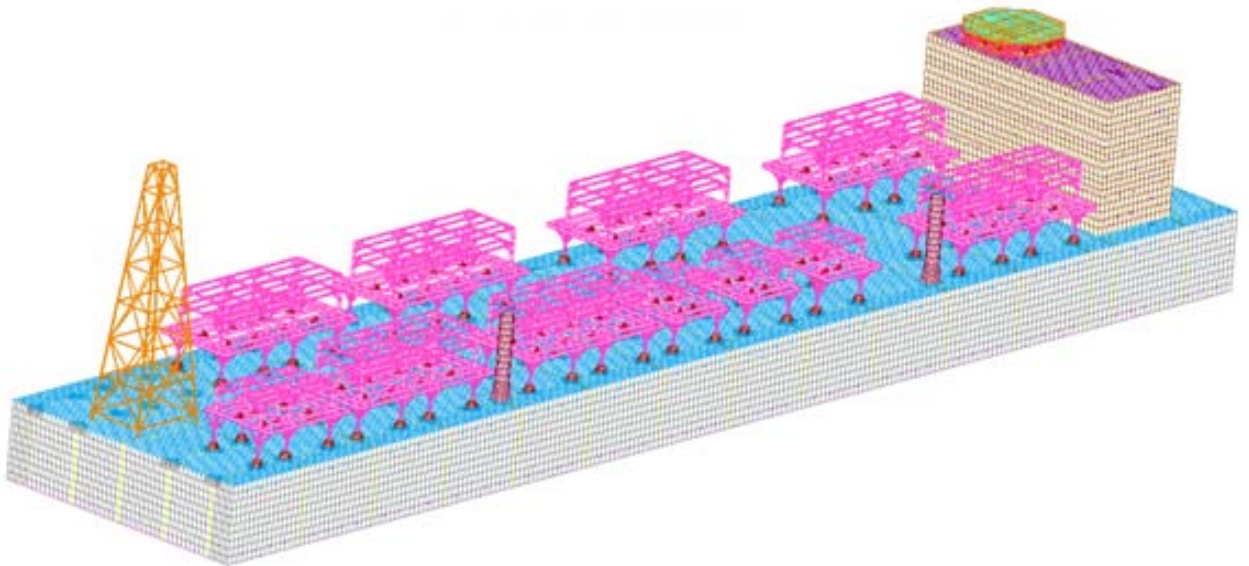
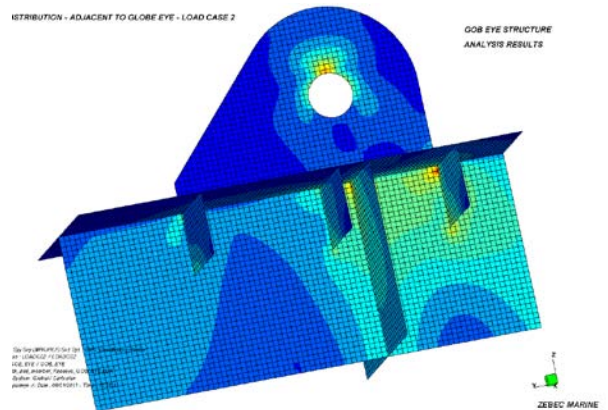
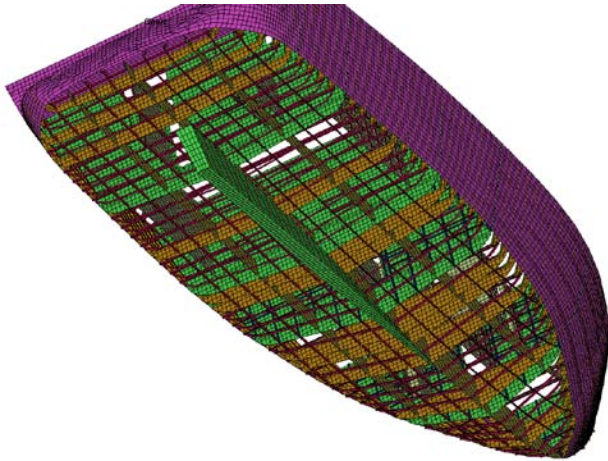
Floating Structures:

- Global FEM structural strength and fatigue analysis
- Two hold or three hold structural analysis
- FEM structural strength assessment of topside modules supporting frame structures including stool structures
- Asset integrity management of Tankers/FPSO – Early detection of potential problem areas due to corrosion, strength, fatigue and buckling
- Global and local vibration analysis to check the resonance of hull superstructure/deck panels/machineries
- Local FEM structural analysis for mooring supporting equipment, fairleads, winches etc.
- Local FEM structural analysis for any structure modifications or strength integrity checks for hull foundations (crane, generators or heavy equipment etc.)
- Jacket load out, skidding, sea transportation, launching strength analysis
- Jack up leg strength analysis during sea transportation



Fixed Structures:

- Jackups leg, global hull, cantilever and drill floor structural analysis.
- Heliport structural analysis
- Frame structure strength analysis for supporting modules/process units/heavy loads
- Jacket leg strength analysis
- Local FEM structural analysis for any structure modifications or strength integrity checks for hull foundations (crane, generators or heavy equipment etc.)



Contact Us: At Mumbai, India: +91-22-42965000
Email: zebec@zebecmarine.com | www.zebecmarine.com